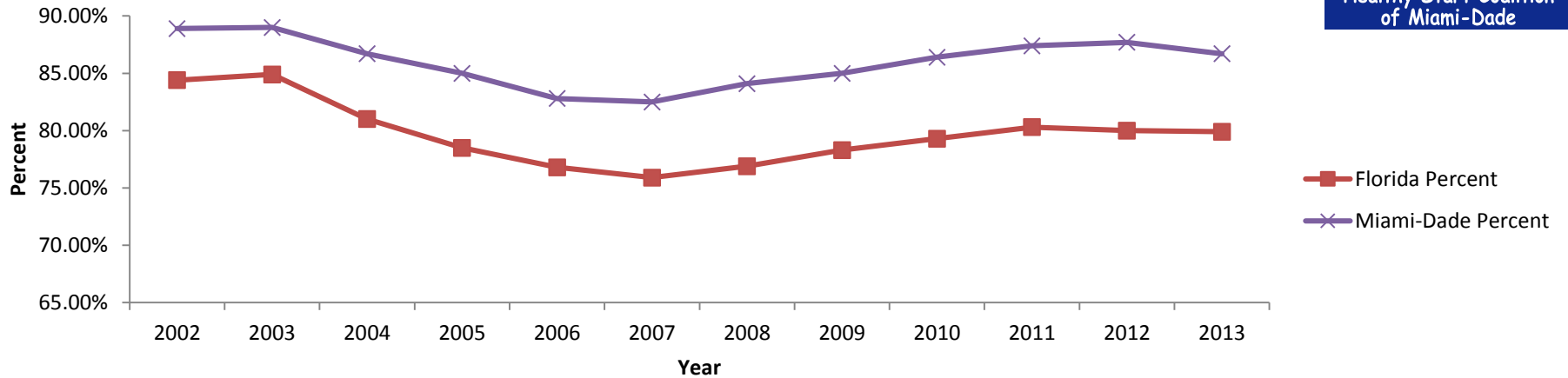


Resident Live Births to Mothers Beginning Prenatal Care in the First Trimester Florida vs. Miami-Dade, 2002-2013



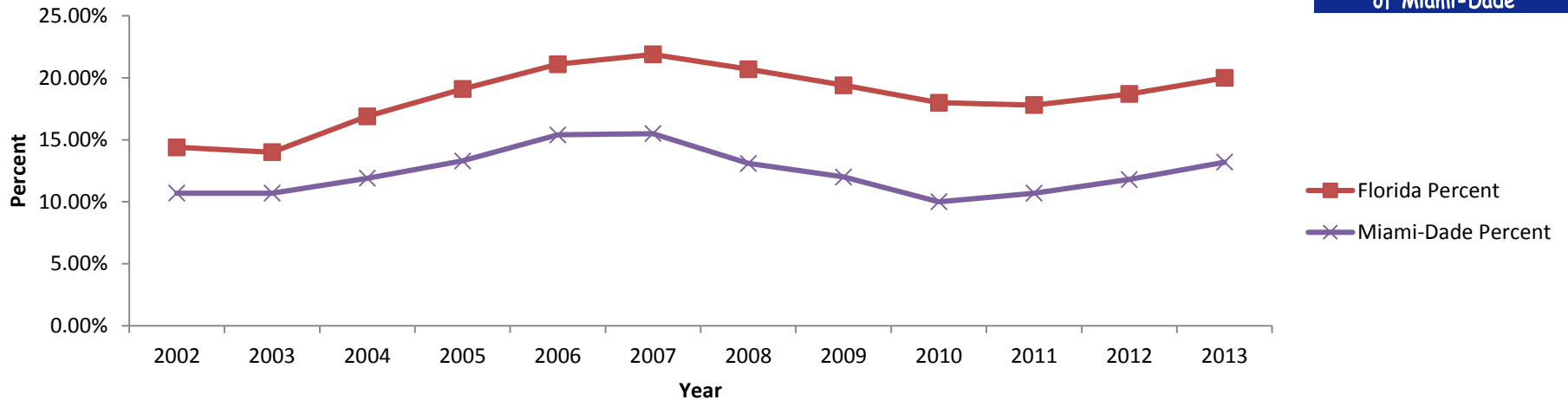
Source: Florida Department of Health, Office of Vital Statistics 2014

Calendar Year: January 1 - December 31

Resident Live Births to Mothers Beginning Prenatal Care in First Trimester, Florida vs. Miami-Dade, 2002-2013

		2002	2003	2004	2005	2006	2007	2008	2009	2010	2011	2012	2013
Florida	Number	173,475	180,107	156,879	158,516	165,076	165,545	159,426	154,752	147,843	154,294	159,307	159,880
	Percent	84.40%	84.90%	81.00%	78.50%	76.80%	75.90%	76.90%	78.30%	79.30%	80.30%	80.00%	79.90%
Miami-Dade	Number	28,574	28,961	24,795	24,310	24,893	24,954	23,333	22,024	19,814	23,379	25,475	25,567
	Percent	88.90%	89.00%	86.70%	85.00%	82.80%	82.50%	84.10%	85.00%	86.40%	87.40%	87.70%	86.70%

Resident Live Births to Mothers Receiving Late or No Prenatal Care Florida vs. Miami-Dade, 2002-2013



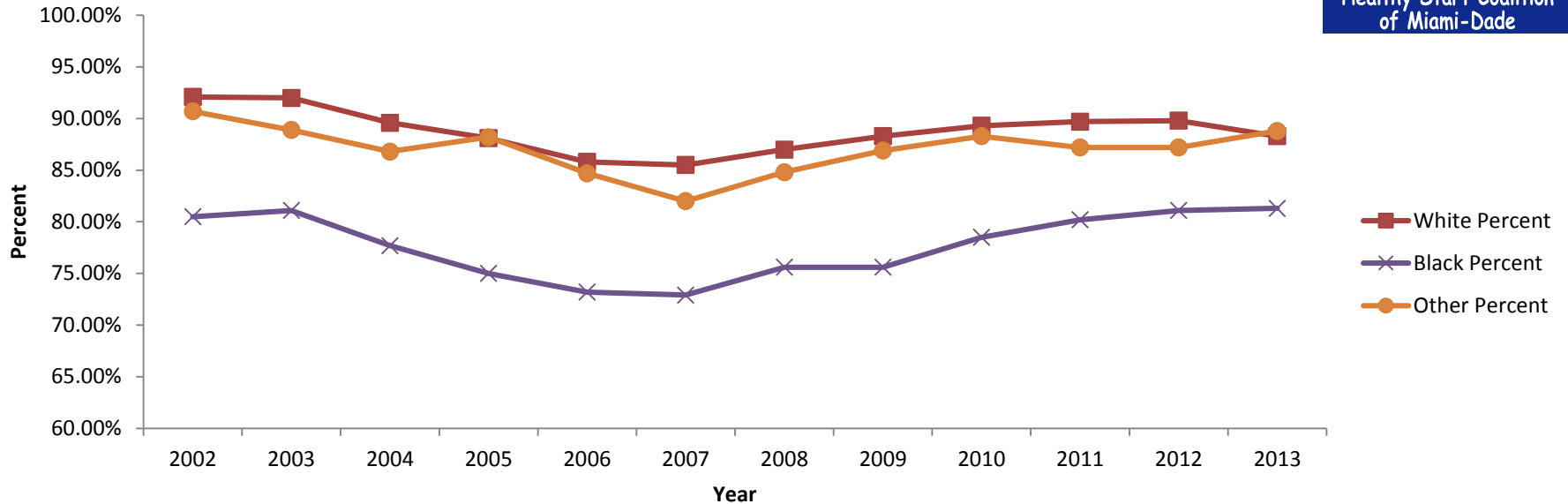
Source: Florida Department of Health, Office of Vital Statistics 2014

Calendar Year: January 1 - December 31

Resident Live Births to Mothers Beginning Prenatal Care in First Trimester, Florida vs. Miami-Dade, 2002-2013

		2002	2003	2004	2005	2006	2007	2008	2009	2010	2011	2012	2013
Florida	Number	29,683	29,694	36,901	43,301	49,959	52,434	47,898	42,941	38,530	37,900	39,790	40,116
	Percent	14.40%	14.00%	16.90%	19.10%	21.10%	21.90%	20.70%	19.40%	18.00%	17.80%	18.70%	20.00%
Miami-Dade	Number	3,447	3,468	3,814	4,299	5,182	5,311	4,397	3,874	3,130	3,370	3,589	3,908
	Percent	10.70%	10.70%	11.90%	13.30%	15.40%	15.50%	13.10%	12.00%	10.00%	10.70%	11.80%	13.20%

Resident Live Births to Mothers Beginning Prenatal Care in the First Trimester by Race Miami-Dade, 2002-2013



Source: Florida Department of Health, Office of Vital Statistics 2014

Calendar Year: January 1 - December 31

Resident Live Births to Mothers Beginning Prenatal Care in First Trimester by Race, Miami-Dade, 2002-2012

		2002	2003	2004	2005	2006	2007	2008	2009	2010	2011	2012	2013
White	Number	20,858	21,472	18,704	18,412	19,012	19,139	17,643	16,499	14,380	17,559	19,038	19,339
	Percent	92.10%	92.00%	89.60%	88.10%	85.80%	85.50%	87.00%	88.30%	89.30%	89.70%	89.80%	88.30%
Black	Number	6,904	6,890	5,325	5,189	5,268	5,219	5,146	5,000	4,954	5,179	5,691	5,494
	Percent	80.50%	81.10%	77.70%	75.00%	73.20%	72.90%	75.60%	75.60%	78.50%	80.20%	81.10%	81.30%
Other	Number	778	577	734	596	586	593	536	505	460	559	628	597
	Percent	90.70%	88.90%	86.80%	88.20%	84.70%	82.00%	84.80%	86.90%	88.30%	87.20%	87.20%	88.80%