

**MCH Health Problem Analysis for
Miami-Dade
Calendar Year 2013**

Population

	Miami-Dade		Florida	
	Number	Percentage	Number	Percentage
Total	2,583,021		19,318,859	
White	2,004,236	77.59	15,122,965	78.28
Nonwhite	578,785	22.41	4,195,894	21.72
Black	497,233	19.25	3,212,321	16.63
Other	81,552	3.16	983,573	5.09

Data Source: Population Estimates from the Florida Legislature, Office of Economic & Demographic Research

Births

	Miami-Dade		Florida	
	Number	Percentage	Number	Percentage
Total	31,147		215,194	
White *	23,128	74.25	153,278	71.23
Black *	7,131	22.89	48,737	22.65
Other *	727	2.33	12,213	5.68
Hispanic **	19,019	61.06	59,083	27.46
Non-Hispanic **	11,279	36.21	154,693	71.89

*Regardless of ethnicity.

**Regardless of race.

Data Source: Florida Department of Health, Office of Vital Statistics

Infant Deaths - Actual vs Expected

Total Births	Actual Infant Deaths	Expected Infant Deaths	Significance
31,147	138	192	L
		Actual Infant Death Rate per 1,000 Births	Expected Infant Death Rate per 1,000 Births
		4.43	6.16

H=Actual Rate is Significantly Higher than the Expected Rate

L=Actual Rate is Significantly Lower than the Expected Rate

N=Actual Rate is Not Significantly Different than the Expected Rate

Data Source: Department of Health - Infant, Maternal and Reproductive Health using Florida Vital Statistics data

Low Birthweight - Actual vs Expected

Total Births	Actual LBW Births	Expected LBW Births	Significance
31,147	2,636	2,666.0	N
		Actual Percent LBW	Expected Percent LBW
		8.46	8.56

H=Actual Rate is Significantly Higher than the Expected Rate

L=Actual Rate is Significantly Lower than the Expected Rate

N=Actual Rate is Not Significantly Different than the Expected Rate

Data Source: Department of Health - Infant, Maternal and Reproductive Health using Florida Vital Statistics data

MCH Health Problem Analysis for Miami-Dade Calendar Year 2013

Deaths Due to Leading Causes of Infant Mortality

Perinatal Conditions	65	Unintentional Injury	12
Congenital Anomalies	27	Heart Disease	4
Sudden Infant Death Syndrome	1		

Data Source: Florida Department of Health, Bureau of Vital Statistics

Infant Mortality

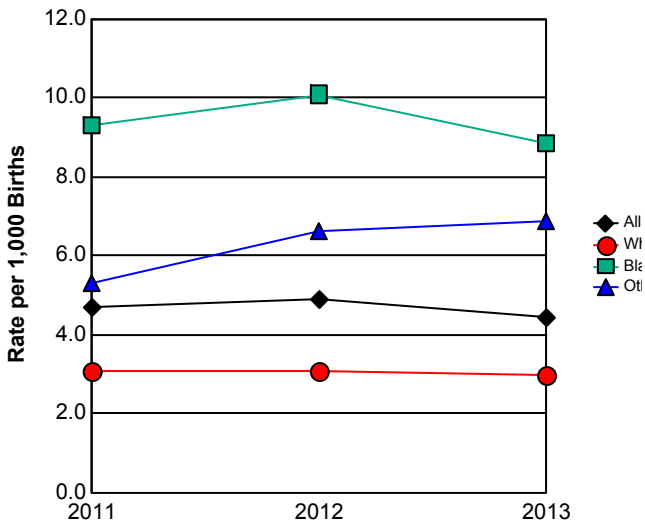
	2011		2012		2013		Comparison to Previous Year	Comparison to Florida Rate
	Miami-Dade	Florida	Miami-Dade	Florida	Miami-Dade	Florida		
Total	147	1,372	149	1,285	138	1,318	Decreased	
Rate per 1000	4.69	6.43	4.89	6.03	4.43	6.12	Decreased	Below
White *	70	698	68	687	69	707	Increased	
Rate per 1000	3.08	4.59	3.08	4.55	2.98	4.61	Decreased	Below
Black *	72	584	76	523	63	517	Decreased	
Rate per 1000	9.30	11.96	10.08	10.68	8.83	10.61	Decreased	Below
Other *	4	86	5	73	5	90	Same	
Rate per 1000	5.31	7.40	6.61	5.92	6.88	7.37	Increased	Below
Hispanic **	61	304	57	292	54	261	Decreased	
Rate per 1000	3.22	5.19	3.15	5.05	2.84	4.42	Decreased	Below
Non-Hispanic **	81	1,049	86	971	79	1,034	Decreased	
Rate per 1000	6.87	6.84	7.62	6.32	7.00	6.68	Decreased	Above

* Regardless of ethnicity.

** Regardless of race.

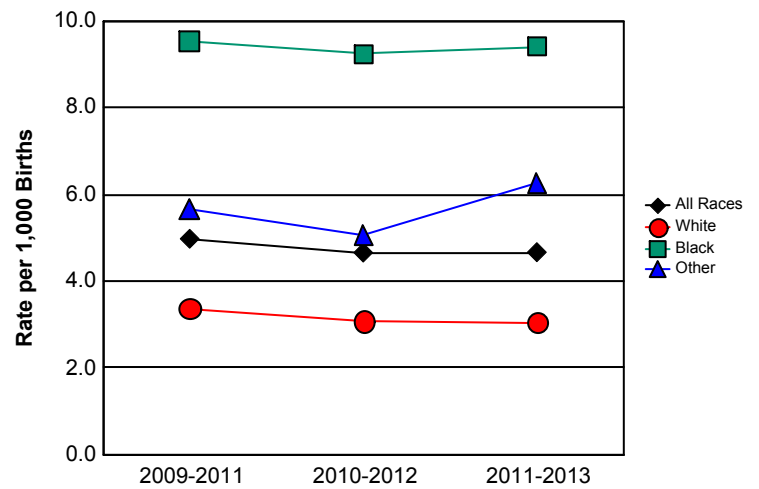
Data Source: Florida Department of Health, Bureau of Vital Statistics

Infant Mortality Rates



	2011	2012	2013
All Races	4.69	4.89	4.43
White	3.08	3.08	2.98
Black	9.30	10.08	8.83
Other	5.31	6.61	6.88

**Infant Mortality Trend
Three-Year Rolling Averages**



	2009-2011	2010-2012	2011-2013
All Races	4.98	4.66	4.67
White	3.37	3.09	3.05
Black	9.54	9.23	9.41
Other	5.66	5.07	6.26

MCH Health Problem Analysis for Miami-Dade Calendar Year 2013

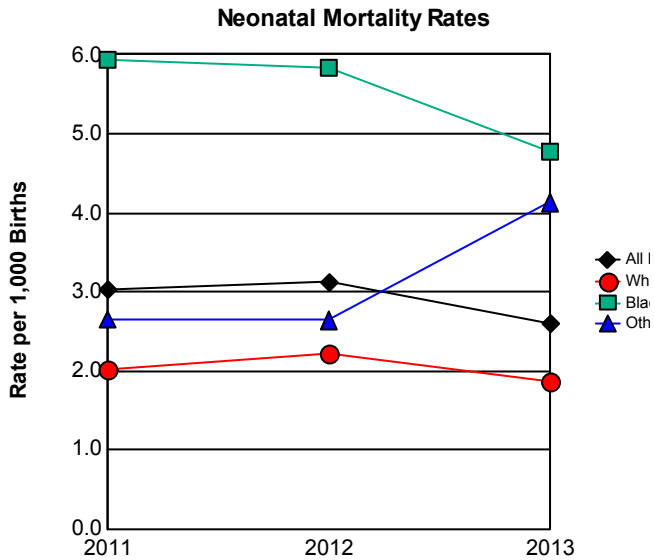
Neonatal Mortality

	2011		2012		2013		Comparison to Previous Year	Comparison to Florida Rate
	Miami-Dade	Florida	Miami-Dade	Florida	Miami-Dade	Florida		
Total	95	915	95	826	81	859	Decreased	
Rate per 1000	3.03	4.29	3.12	3.88	2.60	3.99	Decreased	Below
White *	46	465	49	457	43	458	Decreased	
Rate per 1000	2.02	3.06	2.22	3.03	1.86	2.99	Decreased	Below
Black *	46	401	44	321	34	341	Decreased	
Rate per 1000	5.94	8.21	5.83	6.55	4.77	7.00	Decreased	Below
Other *	2	46	2	47	3	57	Increased	
Rate per 1000	2.66	3.96	2.64	3.81	4.13	4.67	Increased	Below
Hispanic **	39	206	37	193	33	176	Decreased	
Rate per 1000	2.06	3.51	2.05	3.34	1.74	2.98	Decreased	Below
Non-Hispanic **	51	693	52	617	43	663	Decreased	
Rate per 1000	4.33	4.52	4.61	4.02	3.81	4.29	Decreased	Below

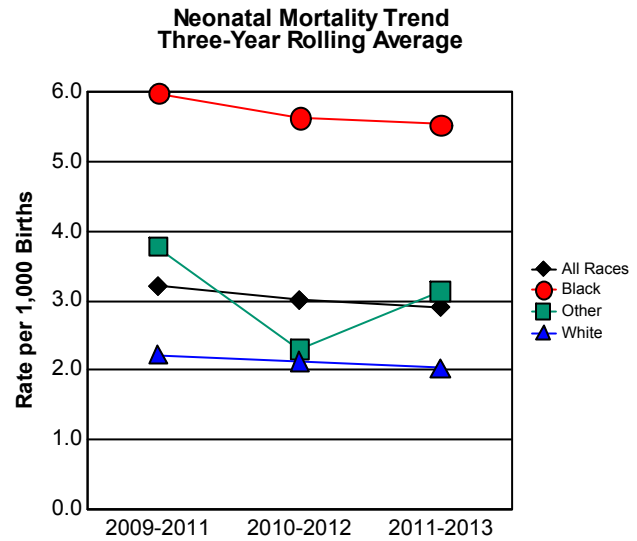
*Regardless of ethnicity.

**Regardless of race.

Data Source: Florida Department of Health, Office of Vital Statistics



	2011	2012	2013
All Races	3.03	3.12	2.60
White	2.02	2.22	1.86
Black	5.94	5.83	4.77
Other	2.66	2.64	4.13



	2009-2011	2010-2012	2011-2013
All Races	3.21	3.01	2.91
White	2.22	2.13	2.03
Black	5.98	5.63	5.53
Other	3.77	2.30	3.13

MCH Health Problem Analysis for Miami-Dade Calendar Year 2013

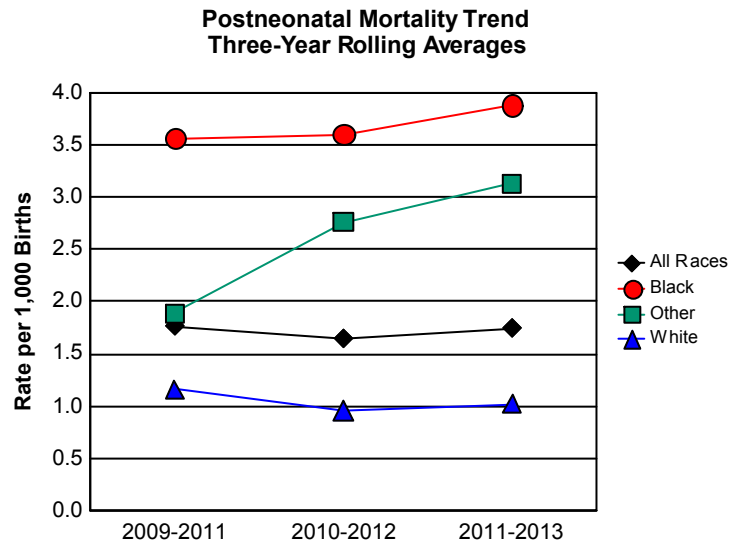
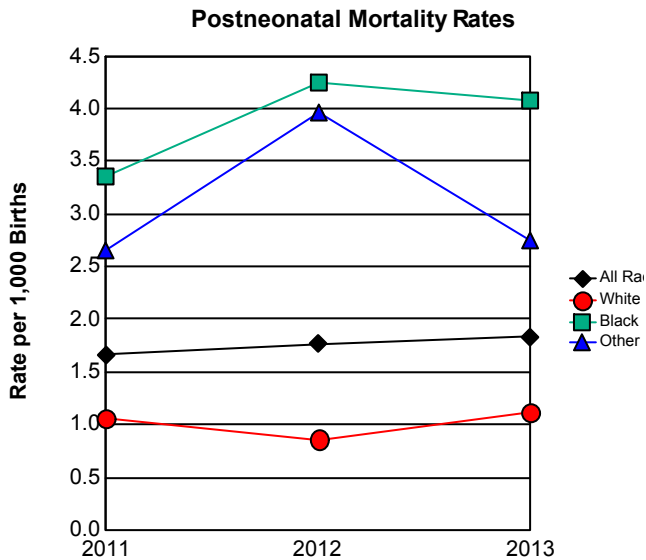
Postneonatal Mortality

	2011		2012		2013		Comparison to Previous Year	Comparison to Florida Rate
	Miami-Dade	Florida	Miami-Dade	Florida	Miami-Dade	Florida		
Total	52	457	54	459	57	459	Increased	
Rate per 1000	1.66	2.14	1.77	2.16	1.83	2.13	Increased	Below
White *	24	233	19	230	26	249	Increased	
Rate per 1000	1.06	1.53	0.86	1.52	1.12	1.62	Increased	Below
Black *	26	183	32	202	29	176	Decreased	
Rate per 1000	3.36	3.75	4.24	4.12	4.07	3.61	Decreased	Above
Other *	2	40	3	26	2	33	Decreased	
Rate per 1000	2.66	3.44	3.96	2.11	2.75	2.70	Decreased	Above
Hispanic **	22	98	20	99	21	85	Increased	
Rate per 1000	1.16	1.67	1.11	1.71	1.10	1.44	Decreased	Below
Non-Hispanic **	30	356	34	354	36	371	Increased	
Rate per 1000	2.54	2.32	3.01	2.30	3.19	2.40	Increased	Above

*Regardless of ethnicity.

** Regardless of race.

Data Source: Florida Department of Health, Office of Vital Statistics



	2011	2012	2013
All Races	1.66	1.77	1.83
White	1.06	0.86	1.12
Black	3.36	4.24	4.07
Other	2.66	3.96	2.75

	2009-2011	2010-2012	2011-2013
All Races	1.77	1.65	1.75
White	1.16	0.96	1.02
Black	3.56	3.60	3.88
Other	1.89	2.76	3.13

MCH Health Problem Analysis for Miami-Dade Calendar Year 2013

Fetal Mortality

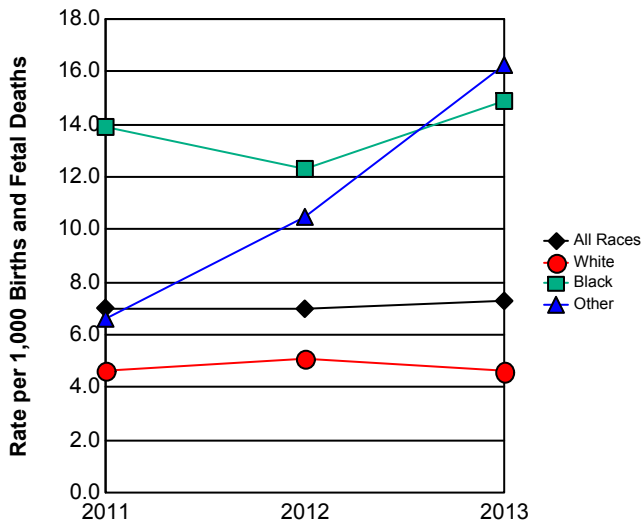
	2011		2012		2013		Comparison to Previous Year	Comparison to Florida Rate
	Miami-Dade	Florida	Miami-Dade	Florida	Miami-Dade	Florida		
Total	222	1,558	215	1,530	229	1,533	Increased	
Rate per 1000	7.03	7.25	7.00	7.13	7.30	7.07	Increased	Above
White *	106	832	113	822	107	869	Decreased	
Rate per 1000	4.64	5.44	5.10	5.42	4.61	5.64	Decreased	Below
Black *	109	641	94	626	108	579	Increased	
Rate per 1000	13.88	12.95	12.31	12.62	14.92	11.74	Increased	Above
Other *	5	76	8	77	12	81	Increased	
Rate per 1000	6.60	6.50	10.46	6.20	16.24	6.59	Increased	Above
Hispanic **	84	298	102	357	101	328	Decreased	
Rate per 1000	4.41	5.06	5.61	6.14	5.28	5.52	Decreased	Below
Non-Hispanic **	126	1,207	92	1,139	103	1,150	Increased	
Rate per 1000	10.57	7.81	8.08	7.36	9.05	7.38	Increased	Above

* Regardless of ethnicity.

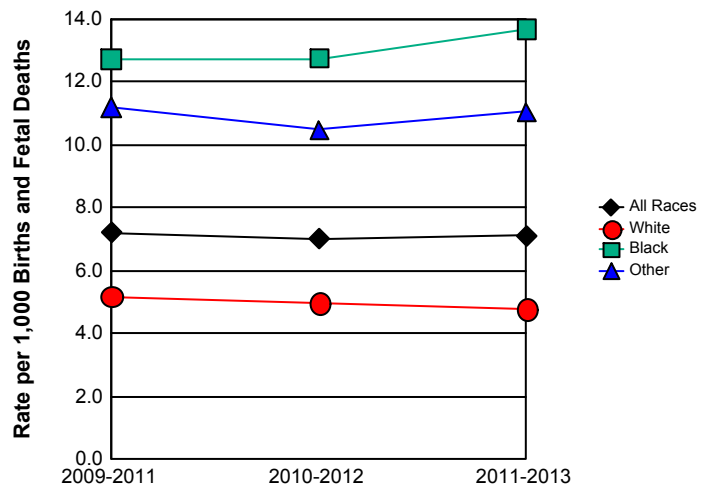
** Regardless of race.

Data Source: Florida Department of Health, Office of Vital Statistics

Fetal Mortality Rates



**Fetal Mortality Trend
Three-Year Rolling Averages**



	2011	2012	2013
All Races	7.0	7.0	7.3
White	4.6	5.1	4.6
Black	13.9	12.3	14.9
Other	6.6	10.5	16.2

	2009-2011	2010-2012	2011-2013
All Races	7.2	7.0	7.1
White	5.2	5.0	4.8
Black	12.7	12.8	13.7
Other	11.2	10.5	11.1

MCH Health Problem Analysis for Miami-Dade Calendar Year 2013

Low Birthweight

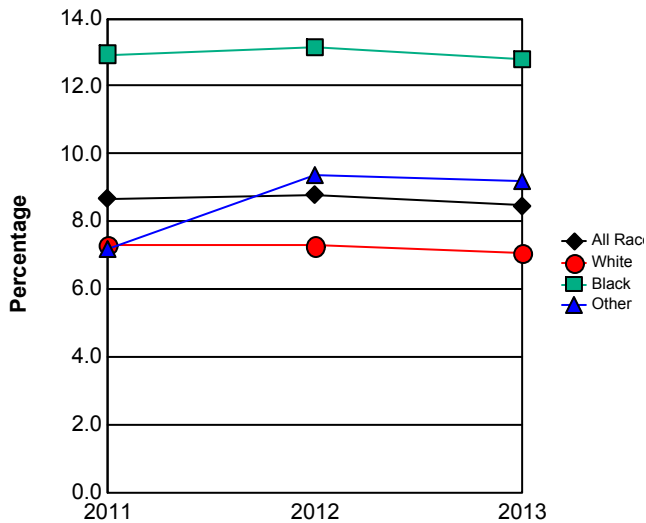
	2011		2012		2013		Comparison to Previous Year	Comparison to Florida Rate
	Miami-Dade	Florida	Miami-Dade	Florida	Miami-Dade	Florida		
Total	2,723	18,558	2,683	18,291	2,636	18,371	Decreased	
Percentage	8.69	8.70	8.80	8.59	8.46	8.54	Decreased	Below
White *	1,660	11,085	1,605	10,918	1,640	10,966	Increased	
Percentage	7.30	7.29	7.28	7.24	7.09	7.15	Decreased	Below
Black *	1,002	6,429	990	6,279	914	6,272	Decreased	
Percentage	12.94	13.16	13.13	12.82	12.82	12.87	Decreased	Below
Other *	54	984	71	1,027	67	1,038	Decreased	
Percentage	7.17	8.47	9.38	8.33	9.22	8.50	Decreased	Above
Hispanic **	1,390	4,296	1,338	4,212	1,351	4,214	Increased	
Percentage	7.33	7.33	7.40	7.29	7.10	7.13	Decreased	Below
Non-Hispanic **	1,283	14,140	1,263	13,953	1,194	13,989	Decreased	
Percentage	10.88	9.22	11.19	9.08	10.59	9.04	Decreased	Above

* Regardless of ethnicity.

** Regardless of race.

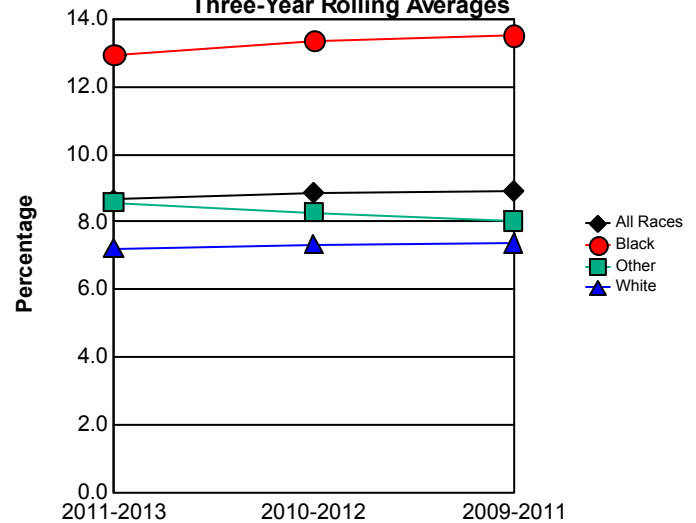
Data Source: Florida Department of Health, Office of Vital Statistics

Percentage of Low Birthweight Births



	2011	2012	2013
All Races	8.69	8.80	8.46
White	7.30	7.28	7.09
Black	12.94	13.13	12.82
Other	7.17	9.38	9.22

**Low Birthweight Births Trend
Three-Year Rolling Averages**



	2009-2011	2010-2012	2011-2013
All Races	8.92	8.87	8.65
White	7.38	7.35	7.22
Black	13.52	13.37	12.96
Other	8.02	8.29	8.58

MCH Health Problem Analysis for Miami-Dade Calendar Year 2013

Very Low Birthweight

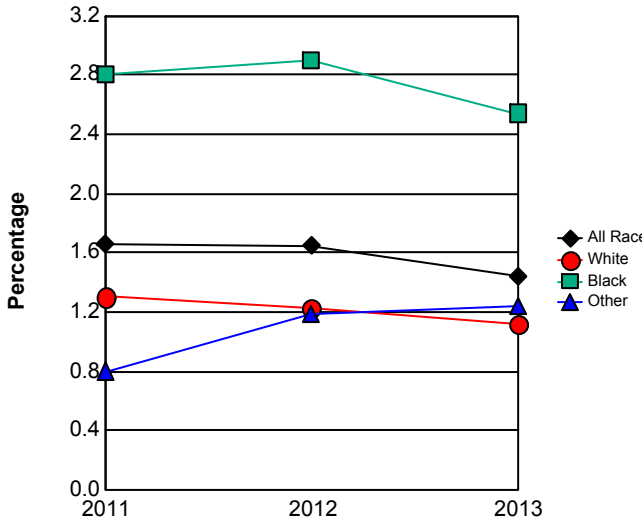
	2011		2012		2013		Comparison to Previous Year	Comparison to Florida Rate
	Miami-Dade	Florida	Miami-Dade	Florida	Miami-Dade	Florida		
Total	520	3,433	502	3,415	450	3,311	Decreased	
Percentage	1.66	1.61	1.65	1.60	1.44	1.54	Decreased	Below
White *	295	1,774	268	1,835	258	1,700	Decreased	
Percentage	1.30	1.17	1.22	1.22	1.12	1.11	Decreased	Above
Black *	217	1,486	219	1,405	181	1,405	Decreased	
Percentage	2.80	3.04	2.90	2.87	2.54	2.88	Decreased	Below
Other *	6	156	9	155	9	170	Same	
Percentage	0.80	1.34	1.19	1.26	1.24	1.39	Increased	Below
Hispanic **	256	771	237	772	208	671	Decreased	
Percentage	1.35	1.32	1.31	1.34	1.09	1.14	Decreased	Below
Non-Hispanic **	253	2,630	248	2,612	224	2,595	Decreased	
Percentage	2.15	1.71	2.20	1.70	1.99	1.68	Decreased	Above

*Regardless of ethnicity.

**Regardless of race.

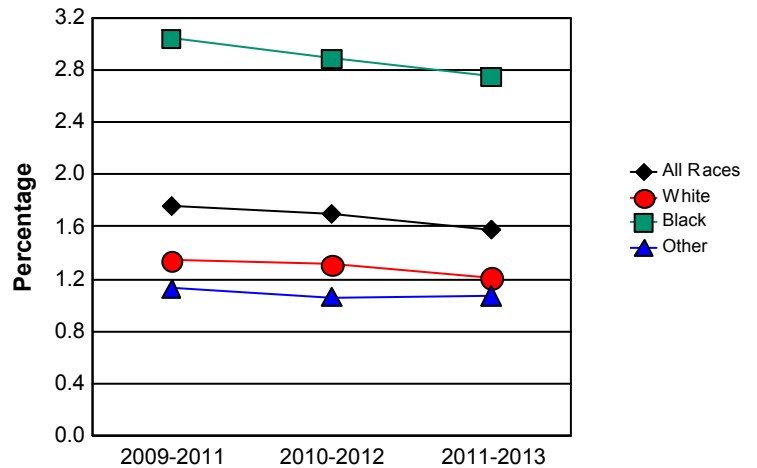
Data Source: Florida Department of Health, Office of Vital Statistics

Percentage of Very Low Birthweight Births



	2011	2012	2013
All Races	1.66	1.65	1.44
White	1.30	1.22	1.12
Black	2.80	2.90	2.54
Other	0.80	1.19	1.24

**Very Low Birthweight Trend
Three-Year Rolling Averages**



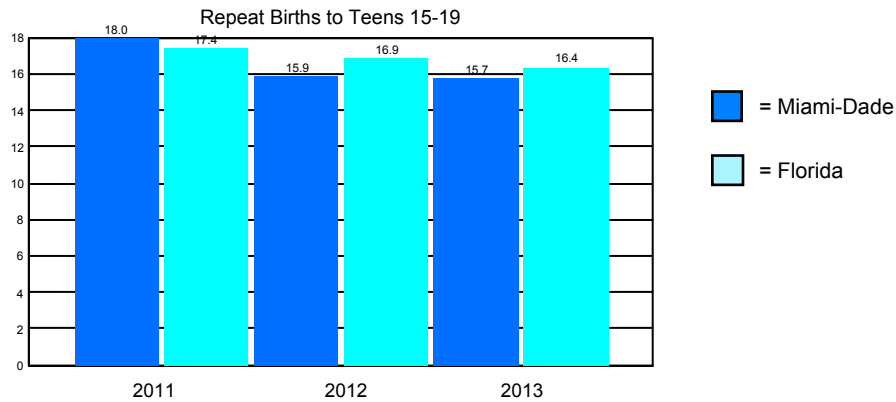
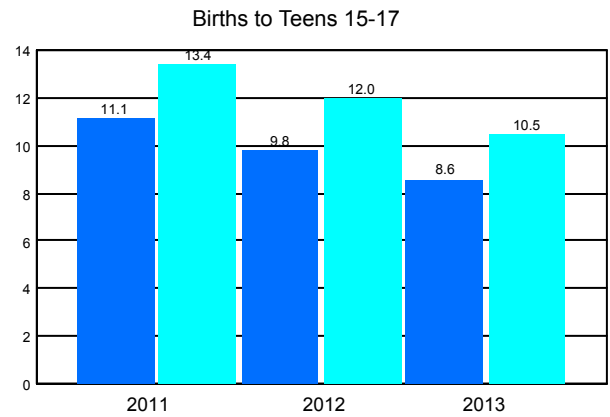
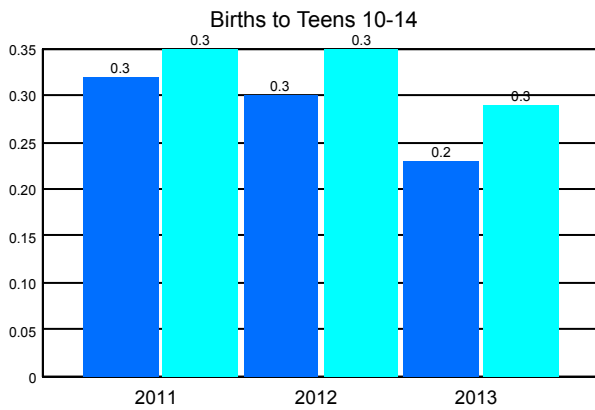
	2009-2011	2010-2012	2011-2013
All Races	1.76	1.70	1.58
White	1.34	1.31	1.21
Black	3.04	2.89	2.75
Other	1.13	1.06	1.07

MCH Health Problem Analysis for Miami-Dade Calendar Year 2013

Births to Teens 15-19

	2011		2012		2013		Comparison to Previous Year
	Miami-Dade	Florida	Miami-Dade	Florida	Miami-Dade	Florida	
Mothers 10-14							
Number	24	164	22	192	17	194	
Rate per 1,000	0.32	0.35	0.30	0.35	0.23	0.29	Decreased
Mothers 15-17							
Number	540	3,698	474	4,219	415	4,723	
Rate per 1,000	11.13	13.38	9.82	10.49	8.59	11.98	Decreased
Percentage of Repeat Births 15-19	17.98	17.45	15.91	16.88	15.73	16.36	Decreased

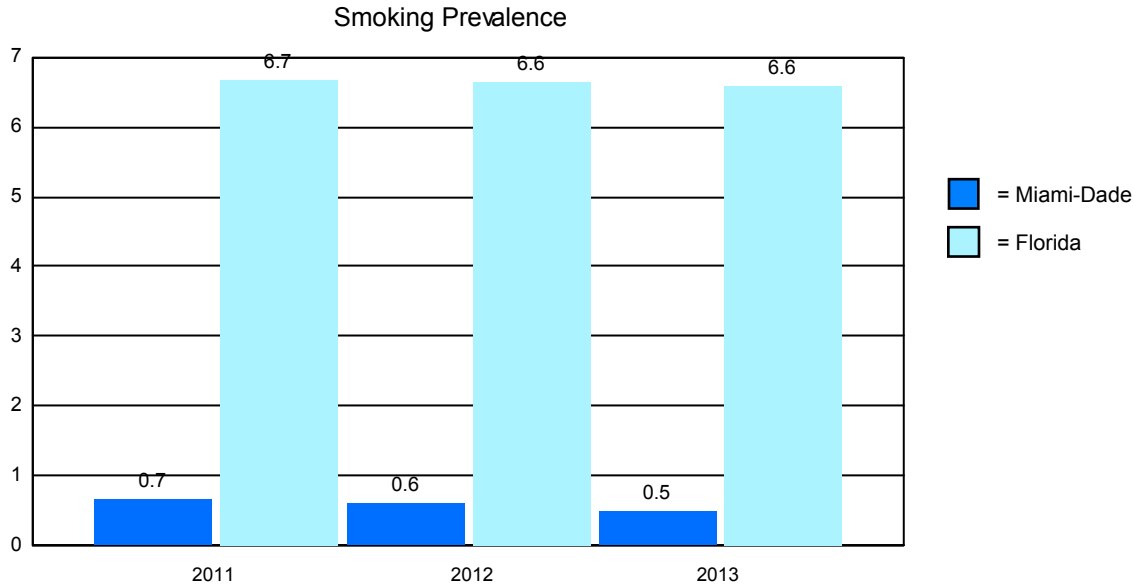
Data Source: Florida Department of Health, Office of Vital Statistics



**MCH Health Problem Analysis for
Miami-Dade
Calendar Year 2013**

Reported Smoking Prevalence in Pregnancy

	2011		2012		2013	
	Miami-Dade	Florida	Miami-Dade	Florida	Miami-Dade	Florida
Mothers Who Smoked	212	14,232	190	14,150	159	14,156
Percentage of Births	0.68	6.67	0.62	6.64	0.51	6.58



Data Source: Florida Department of Health, Office of Vital Statistics

Pediatric AIDS Cases Among Persons 0 - 4 Years of Age

	2011	2012	2013
Miami-Dade	1	1	3
Florida	11	9	6

Data Source: Florida Department of Health, Bureau of HIV/AIDS

CHD Prenatal Care Clients Offered HIV Counseling

	2011		2012		2013	
	Miami-Dade	Florida	Miami-Dade	Florida	Miami-Dade	Florida
	0.00%	49.12%	0.00%	52.01%	0.00%	44.33%

MCH Health Problem Analysis for Miami-Dade Calendar Year 2013

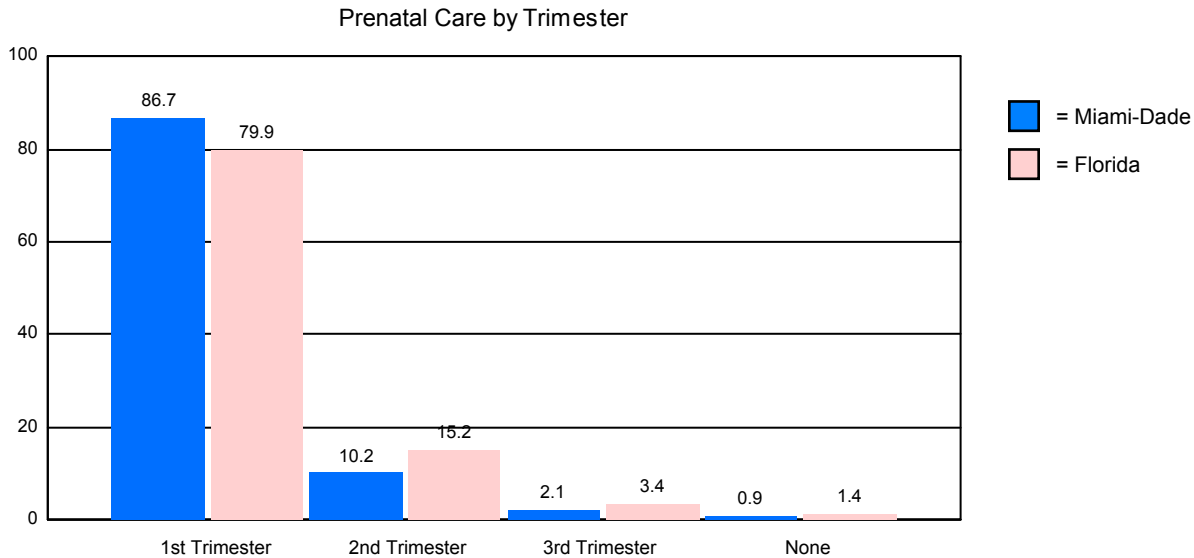
WIC Services

	Persons Eligible for WIC	Percentage Served by WIC
2011		
Miami-Dade	75,515	79.81
Florida	502,959	86.57
2012		
Miami-Dade	72,859	77.06
Florida	481,110	82.89
2013		
Miami-Dade	0	0.00
Florida	0	0.00

Data Source: Florida Department of Health, WIC & Nutrition Services
Call the [Data Management Unit](#) of WIC & Nutrition Services at 850-245-4202 for the latest data.

Prenatal Care by Trimester of Pregnancy

	1st Trimester	2nd Trimester	3rd Trimester	No Prenatal Care
Miami-Dade	86.74%	10.19%	2.12%	0.95%
Florida	79.94%	15.20%	3.44%	1.42%



Data Source: Florida Department of Health, Office of Vital Statistics

**MCH Health Problem Analysis for
Miami-Dade
Calendar Year 2013**

Immunizations Among 2-Year-Old CHD Clients

	Percentage Fully Immunized	
	Miami-Dade	Florida
2011	98.0%	94.0%
2012	97.0%	94.0%
2013	0.0%	0.0%

Data Source: Florida Department of Health, Bureau of Immunizations

Healthy Start Prenatal Screening and Services

	2011		2012		2013	
	Miami-Dade	Florida	Miami-Dade	Florida	Miami-Dade	Florida
Offered Rate %	91.97	96.99	91.85	91.50	85.72	92.96
Screening Rate %	80.53	86.01	83.23	81.94	76.40	82.60
Consent Rate %	87.56	88.68	90.62	89.55	89.13	88.86

	Number		Percentage	
	Miami-Dade	Florida	Miami-Dade	Florida
Estimated Number of Pregnant Women	31,131	214,431		
Offered Screen	26,686	199,325	85.72	92.96
Consenting to Screen	23,785	177,120	89.13	88.86
Positive Screen + Referred	13,955	98,531	58.67	55.63
Consenting to HS Participation	13,412	94,224	96.11	95.63
Received Initial Contact	8,787	62,125	65.52	65.93
Need Initial Assessment	3,481	19,967	39.62	32.14
Received Initial Assessment	2,961	16,501	85.06	82.64
Need Ongoing Care Coordination	4,546	25,759	51.74	41.46

	Miami-Dade				Florida
	Clients	Percentage of Clients	Encounters per Client	Services per Encounter	Percentage of Clients
Total Receiving HS Prenatal Service	16,937		4.92	3.94	
Total IC/IA Only	1,259	7.43	3.50	3.14	12.56
Total IC/IA/Other HS Service	1,624	9.59	2.08	7.78	8.62
Track or Not Face-to-Face	3,503	20.68	6.20	2.91	27.18
Face-to-Face, without FSP	1,363	8.05	6.88	5.57	9.75
Face-to-Face, with FSP	2,288	13.51	10.86	5.24	9.35
Unable to Locate	572	3.38	6.74	2.08	8.17
Unable to Complete Initial Contact	4,929	29.10	2.35	1.61	18.12

	Miami-Dade		
	Clients	Services	Services/Client
Nutritional Assessment and Counseling	666	6,225	9.35
Psychosocial Counseling	1,023	10,432	10.20
Parenting Education	5,203	29,012	5.58
Childbirth Education	3,938	32,615	8.28
Breastfeeding Education	4,286	18,194	4.24
Smoking Cessation Counseling	2,610	5,554	2.13
Interconceptional Education & Counseling	3,472	11,870	3.42

**MCH Health Problem Analysis for
Miami-Dade
Calendar Year 2013**

Pregnant Drug-Abusing Women

	Clients	Encounters/Client	Services/Encounter
Miami-Dade	29	14.10	4.67
Florida	1,470	12.86	4.40

Healthy Start Infant Screening and Services

	2011		2012		2013	
	Miami-Dade	Florida	Miami-Dade	Florida	Miami-Dade	Florida
Screening Rate %	98.63	91.21	98.87	91.77	99.36	94.58

	Number		Percentage	
	Miami-Dade	Florida	Miami-Dade	Florida
Total Number of Births	31,131	214,431		
Consenting to Screen	30,932	202,807	99.36	94.58
Positive Screen + Referred	11,131	72,561	35.99	35.78
Consenting to HS Participation	10,404	62,588	93.47	86.26
Received Initial Contact	5,834	42,750	56.07	68.30
Need Initial Assessment	1,968	10,830	33.73	25.33
Received Initial Assessment	1,646	10,413	83.64	96.15
Need Ongoing Care Coordination	2,790	16,569	47.82	38.76

	Miami-Dade			Florida
	Clients	Percentage of Clients	Encounters per Client	Services per Encounter
Total Receiving HS Infant Service	11,183		5.10	3.76
Total IC/IA Only	516	4.61	3.88	8.08
Total IC/IA/Other HS Service	1,698	15.18	1.31	17.27
Track or Not Face-to-Face	3,537	31.63	3.89	27.61
Face-to-Face, without FSP	619	5.54	9.08	9.37
Face-to-Face, with FSP	1,263	11.29	18.72	11.57
Unable to Locate	338	3.02	6.58	4.62
Unable to Complete Initial Contact	2,139	19.13	2.28	16.53

	Miami-Dade		
	Clients	Services	Services/Client
Nutritional Assessment and Counseling	24	144	6.00
Psychosocial Counseling	567	9,097	16.04
Parenting Education	4,878	23,176	4.75
Childbirth Education	27	115	4.26
Breastfeeding Education	3,118	12,463	4.00
Smoking Cessation Counseling	1,253	2,426	1.94
Interconceptional Education & Counseling	1,810	5,672	3.13

Substance-exposed Newborns

	Clients	Encounters/Client	Services/Encounter
Miami-Dade	92	10.53	4.03
Florida	1,286	11.99	4.54