

**MCH Health Problem Analysis for
Miami-Dade
Calendar Year 2012**

Population

	Miami-Dade		Florida	
	Number	Percentage	Number	Percentage
Total	2,534,877		19,042,458	
White	1,965,545	77.54	14,930,936	78.41
Nonwhite	569,332	22.46	4,111,522	21.59
Black	489,307	19.30	3,150,349	16.54
Other	80,025	3.16	961,173	5.05

Data Source: Population Estimates from the Florida Legislature, Office of Economic & Demographic Research

Births

	Miami-Dade		Florida	
	Number	Percentage	Number	Percentage
Total	30,479		212,954	
White *	22,046	72.33	150,866	70.84
Black *	7,542	24.74	48,992	23.01
Other *	757	2.48	12,335	5.79
Hispanic **	18,076	59.31	57,798	27.14
Non-Hispanic **	11,291	37.05	153,622	72.14

*Regardless of ethnicity.

**Regardless of race.

Data Source: Florida Department of Health, Office of Vital Statistics

Infant Deaths - Actual vs Expected

Total Births	Actual Infant Deaths	Expected Infant Deaths	Significance
30,479	149	184	L
		Actual Infant Death Rate per 1,000 Births	Expected Infant Death Rate per 1,000 Births
		4.89	6.05

H=Actual Rate is Significantly Higher than the Expected Rate

L=Actual Rate is Significantly Lower than the Expected Rate

N=Actual Rate is Not Significantly Different than the Expected Rate

Data Source: Department of Health - Infant, Maternal and Reproductive Health using Florida Vital Statistics data

Low Birthweight - Actual vs Expected

Total Births	Actual LBW Births	Expected LBW Births	Significance
30,479	2,683	2,642.0	N
		Actual Percent LBW	Expected Percent LBW
		8.80	8.67

H=Actual Rate is Significantly Higher than the Expected Rate

L=Actual Rate is Significantly Lower than the Expected Rate

N=Actual Rate is Not Significantly Different than the Expected Rate

Data Source: Department of Health - Infant, Maternal and Reproductive Health using Florida Vital Statistics data

MCH Health Problem Analysis for Miami-Dade Calendar Year 2012

Deaths Due to Leading Causes of Infant Mortality

Perinatal Conditions <u>68</u>	Unintentional Injury <u>5</u>
Congenital Anomalies <u>35</u>	Heart Disease <u>1</u>
Sudden Infant Death Syndrome <u>1</u>	

Data Source: Florida Department of Health, Bureau of Vital Statistics

Infant Mortality

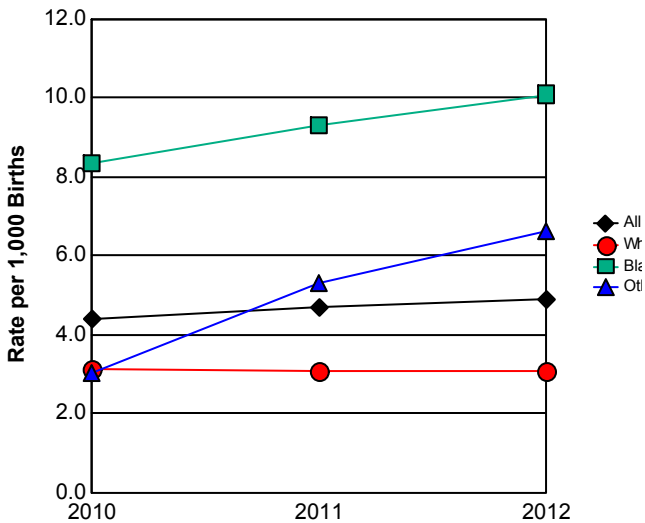
	2010		2011		2012		Comparison to Previous Year	Comparison to Florida Rate
	Miami-Dade	Florida	Miami-Dade	Florida	Miami-Dade	Florida		
Total	138	1,400	147	1,372	149	1,285	Increased	
Rate per 1000	4.40	6.53	4.69	6.43	4.89	6.03	Increased	Below
White *	71	750	70	698	68	687	Decreased	
Rate per 1000	3.12	4.89	3.08	4.59	3.08	4.55	Same	Below
Black *	65	580	72	584	76	523	Increased	
Rate per 1000	8.34	11.79	9.30	11.96	10.08	10.68	Increased	Below
Other *	2	69	4	86	5	73	Increased	
Rate per 1000	3.03	6.44	5.31	7.40	6.61	5.92	Increased	Above
Hispanic **	60	307	61	304	57	292	Decreased	
Rate per 1000	3.14	5.15	3.22	5.19	3.15	5.05	Decreased	Below
Non-Hispanic **	70	1,074	81	1,049	86	971	Increased	
Rate per 1000	5.80	6.98	6.87	6.84	7.62	6.32	Increased	Above

* Regardless of ethnicity.

** Regardless of race.

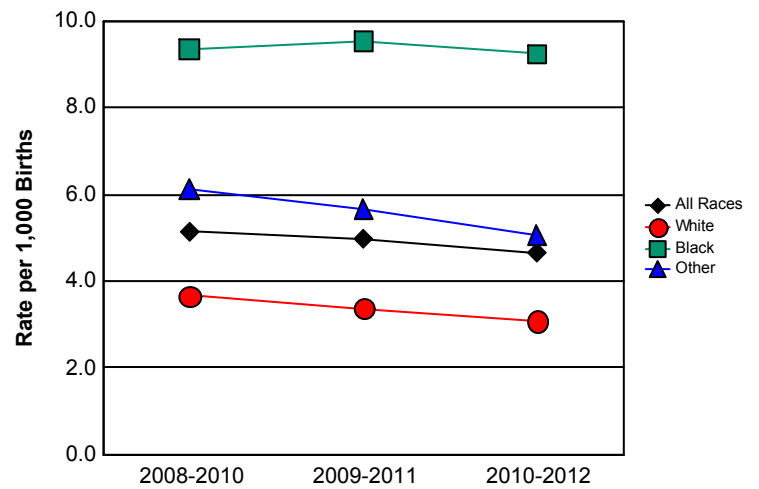
Data Source: Florida Department of Health, Bureau of Vital Statistics

Infant Mortality Rates



	2010	2011	2012
All Races	4.40	4.69	4.89
White	3.12	3.08	3.08
Black	8.34	9.30	10.08
Other	3.03	5.31	6.61

**Infant Mortality Trend
Three-Year Rolling Averages**



	2008-2010	2009-2011	2010-2012
All Races	5.14	4.98	4.66
White	3.66	3.37	3.09
Black	9.35	9.54	9.23
Other	6.12	5.66	5.07

MCH Health Problem Analysis for Miami-Dade Calendar Year 2012

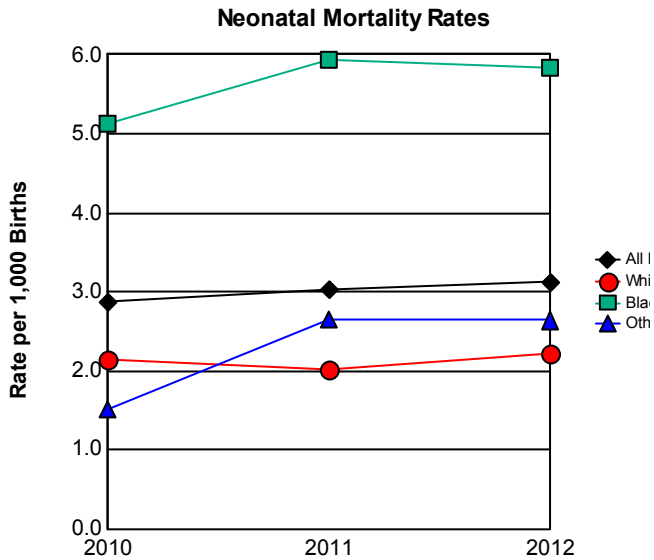
Neonatal Mortality

	2010		2011		2012		Comparison to Previous Year	Comparison to Florida Rate
	Miami-Dade	Florida	Miami-Dade	Florida	Miami-Dade	Florida		
Total	90	929	95	915	95	826	Same	
Rate per 1000	2.87	4.33	3.03	4.29	3.12	3.88	Increased	Below
White *	49	497	46	465	49	457	Increased	
Rate per 1000	2.15	3.24	2.02	3.06	2.22	3.03	Increased	Below
Black *	40	385	46	401	44	321	Decreased	
Rate per 1000	5.13	7.83	5.94	8.21	5.83	6.55	Decreased	Below
Other *	1	46	2	46	2	47	Same	
Rate per 1000	1.51	4.29	2.66	3.96	2.64	3.81	Decreased	Below
Hispanic **	41	207	39	206	37	193	Decreased	
Rate per 1000	2.15	3.47	2.06	3.51	2.05	3.34	Decreased	Below
Non-Hispanic **	41	705	51	693	52	617	Increased	
Rate per 1000	3.40	4.58	4.33	4.52	4.61	4.02	Increased	Above

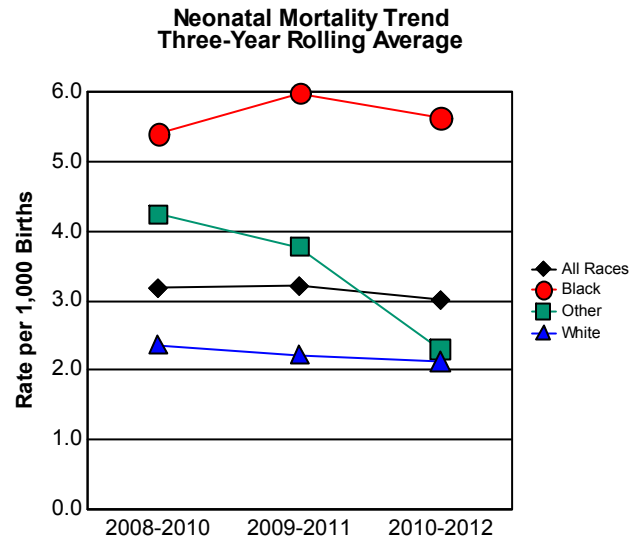
*Regardless of ethnicity.

**Regardless of race.

Data Source: Florida Department of Health, Office of Vital Statistics



	2010	2011	2012
All Races	2.87	3.03	3.12
White	2.15	2.02	2.22
Black	5.13	5.94	5.83
Other	1.51	2.66	2.64



	2008-2010	2009-2011	2010-2012
All Races	3.18	3.21	3.01
White	2.37	2.22	2.13
Black	5.40	5.98	5.63
Other	4.24	3.77	2.30

MCH Health Problem Analysis for Miami-Dade Calendar Year 2012

Postneonatal Mortality

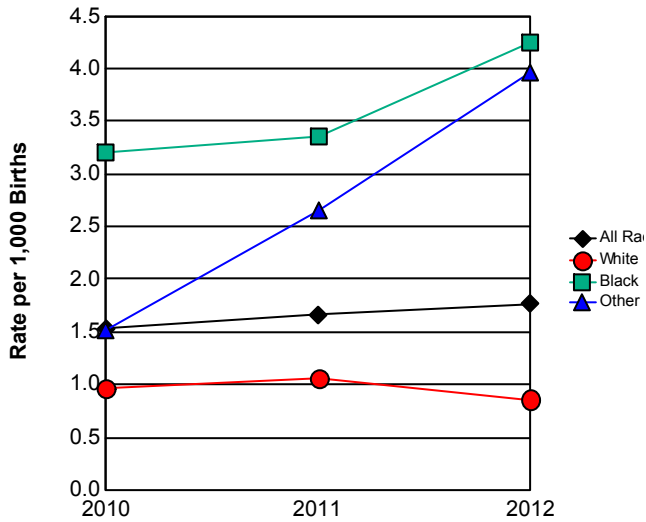
	2010		2011		2012		Comparison to Previous Year	Comparison to Florida Rate
	Miami-Dade	Florida	Miami-Dade	Florida	Miami-Dade	Florida		
Total	48	471	52	457	54	459	Increased	
Rate per 1000	1.53	2.20	1.66	2.14	1.77	2.16	Increased	Below
White *	22	253	24	233	19	230	Decreased	
Rate per 1000	0.97	1.65	1.06	1.53	0.86	1.52	Decreased	Below
Black *	25	195	26	183	32	202	Increased	
Rate per 1000	3.21	3.96	3.36	3.75	4.24	4.12	Increased	Above
Other *	1	23	2	40	3	26	Increased	
Rate per 1000	1.51	2.15	2.66	3.44	3.96	2.11	Increased	Above
Hispanic **	19	100	22	98	20	99	Decreased	
Rate per 1000	0.99	1.68	1.16	1.67	1.11	1.71	Decreased	Below
Non-Hispanic **	29	369	30	356	34	354	Increased	
Rate per 1000	2.40	2.40	2.54	2.32	3.01	2.30	Increased	Above

*Regardless of ethnicity.

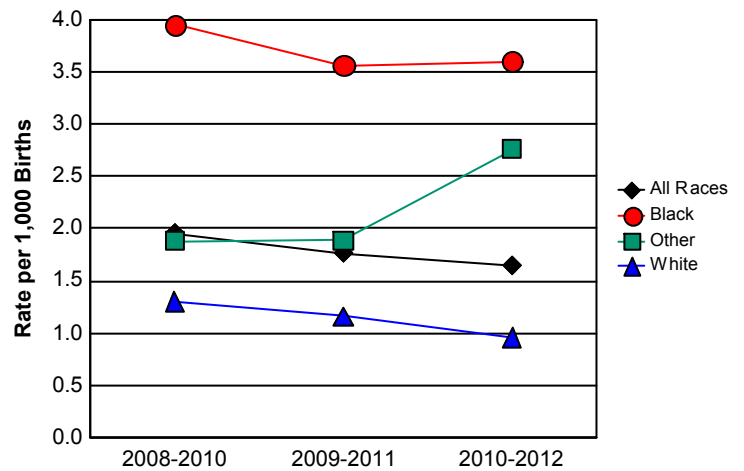
** Regardless of race.

Data Source: Florida Department of Health, Office of Vital Statistics

Postneonatal Mortality Rates



**Postneonatal Mortality Trend
Three-Year Rolling Averages**



	2010	2011	2012
All Races	1.53	1.66	1.77
White	0.97	1.06	0.86
Black	3.21	3.36	4.24
Other	1.51	2.66	3.96

	2008-2010	2009-2011	2010-2012
All Races	1.96	1.77	1.65
White	1.30	1.16	0.96
Black	3.95	3.56	3.60
Other	1.88	1.89	2.76

MCH Health Problem Analysis for Miami-Dade Calendar Year 2012

Fetal Mortality

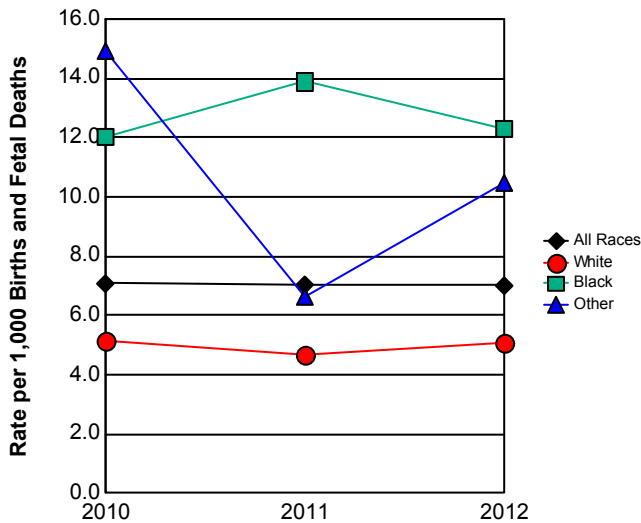
	2010		2011		2012		Comparison to Previous Year	Comparison to Florida Rate
	Miami-Dade	Florida	Miami-Dade	Florida	Miami-Dade	Florida		
Total	223	1,551	222	1,558	215	1,530	Decreased	
Rate per 1000	7.07	7.18	7.03	7.25	7.00	7.13	Decreased	Below
White *	118	822	106	832	113	822	Increased	
Rate per 1000	5.16	5.33	4.64	5.44	5.10	5.42	Increased	Below
Black *	95	645	109	641	94	626	Decreased	
Rate per 1000	12.05	12.94	13.88	12.95	12.31	12.62	Decreased	Below
Other *	10	79	5	76	8	77	Increased	
Rate per 1000	14.90	7.32	6.60	6.50	10.46	6.20	Increased	Above
Hispanic **	101	345	84	298	102	357	Increased	
Rate per 1000	5.26	5.75	4.41	5.06	5.61	6.14	Increased	Below
Non-Hispanic **	97	1,151	126	1,207	92	1,139	Decreased	
Rate per 1000	7.98	7.42	10.57	7.81	8.08	7.36	Decreased	Above

* Regardless of ethnicity.

** Regardless of race.

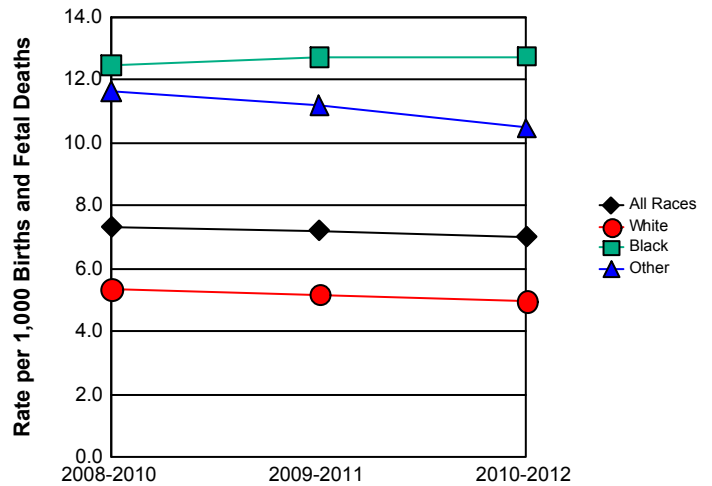
Data Source: Florida Department of Health, Office of Vital Statistics

Fetal Mortality Rates



	2010	2011	2012
All Races	7.1	7.0	7.0
White	5.2	4.6	5.1
Black	12.1	13.9	12.3
Other	14.9	6.6	10.5

**Fetal Mortality Trend
Three-Year Rolling Averages**



	2008-2010	2009-2011	2010-2012
All Races	7.3	7.2	7.0
White	5.4	5.2	5.0
Black	12.5	12.7	12.8
Other	11.6	11.2	10.5

MCH Health Problem Analysis for Miami-Dade Calendar Year 2012

Low Birthweight

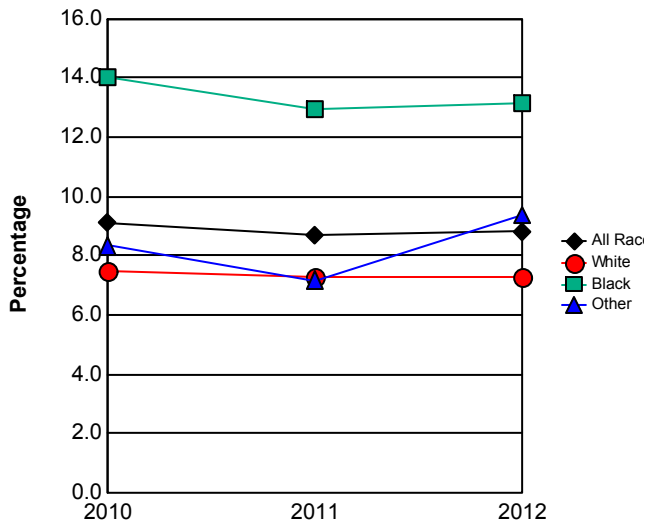
	2010		2011		2012		Comparison to Previous Year	Comparison to Florida Rate
	Miami-Dade	Florida	Miami-Dade	Florida	Miami-Dade	Florida		
Total	2,858	18,719	2,723	18,558	2,683	18,291	Decreased	
Percentage	9.12	8.73	8.69	8.70	8.80	8.59	Increased	Above
White *	1,700	10,945	1,660	11,085	1,605	10,918	Decreased	
Percentage	7.47	7.13	7.30	7.29	7.28	7.24	Decreased	Above
Black *	1,094	6,744	1,002	6,429	990	6,279	Decreased	
Percentage	14.04	13.71	12.94	13.16	13.13	12.82	Increased	Above
Other *	55	948	54	984	71	1,027	Increased	
Percentage	8.32	8.85	7.17	8.47	9.38	8.33	Increased	Above
Hispanic **	1,426	4,210	1,390	4,296	1,338	4,212	Decreased	
Percentage	7.46	7.06	7.33	7.33	7.40	7.29	Increased	Above
Non-Hispanic **	1,414	14,400	1,283	14,140	1,263	13,953	Decreased	
Percentage	11.72	9.36	10.88	9.22	11.19	9.08	Increased	Above

* Regardless of ethnicity.

** Regardless of race.

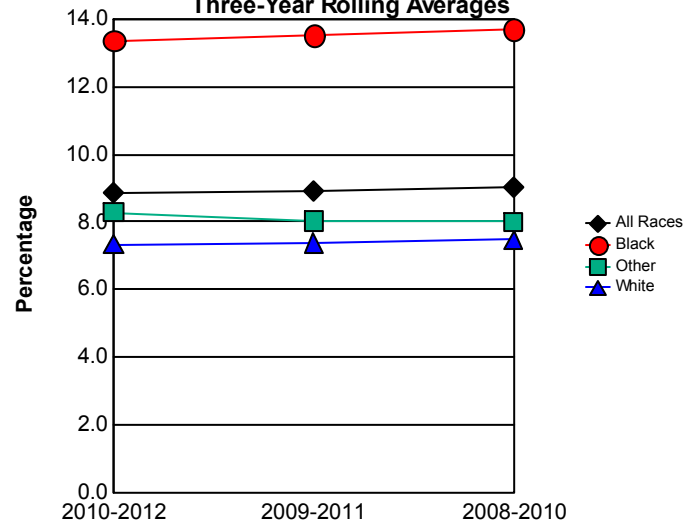
Data Source: Florida Department of Health, Office of Vital Statistics

Percentage of Low Birthweight Births



	2010	2011	2012
All Races	9.12	8.69	8.80
White	7.47	7.30	7.28
Black	14.04	12.94	13.13
Other	8.32	7.17	9.38

**Low Birthweight Births Trend
Three-Year Rolling Averages**



	2008-2010	2009-2011	2010-2012
All Races	9.03	8.92	8.87
White	7.47	7.38	7.35
Black	13.69	13.52	13.37
Other	8.01	8.02	8.29

MCH Health Problem Analysis for Miami-Dade Calendar Year 2012

Very Low Birthweight

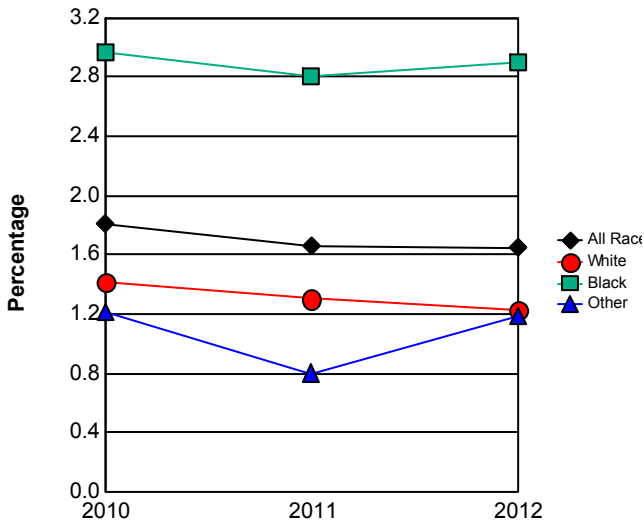
	2010		2011		2012		Comparison to Previous Year	Comparison to Florida Rate
	Miami-Dade	Florida	Miami-Dade	Florida	Miami-Dade	Florida		
Total	566	3,522	520	3,433	502	3,415	Decreased	
Percentage	1.81	1.64	1.66	1.61	1.65	1.60	Decreased	Above
White *	322	1,901	295	1,774	268	1,835	Decreased	
Percentage	1.41	1.24	1.30	1.17	1.22	1.22	Decreased	Below
Black *	231	1,467	217	1,486	219	1,405	Increased	
Percentage	2.97	2.98	2.80	3.04	2.90	2.87	Increased	Above
Other *	8	136	6	156	9	155	Increased	
Percentage	1.21	1.27	0.80	1.34	1.19	1.26	Increased	Below
Hispanic **	268	770	256	771	237	772	Decreased	
Percentage	1.40	1.29	1.35	1.32	1.31	1.34	Decreased	Below
Non-Hispanic **	292	2,721	253	2,630	248	2,612	Decreased	
Percentage	2.42	1.77	2.15	1.71	2.20	1.70	Increased	Above

*Regardless of ethnicity.

**Regardless of race.

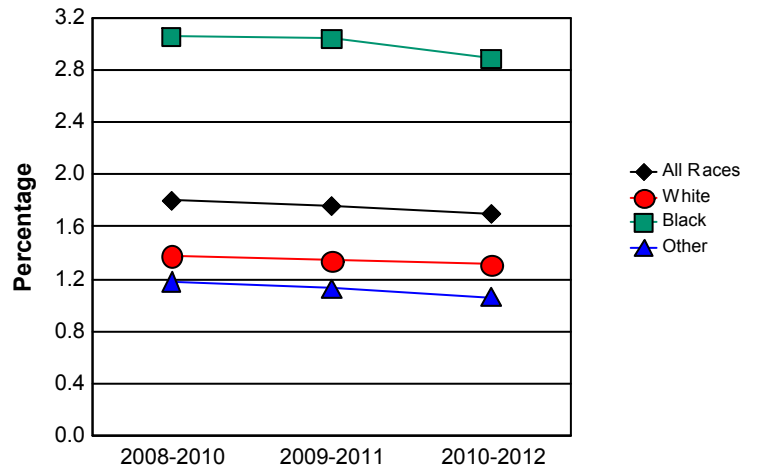
Data Source: Florida Department of Health, Office of Vital Statistics

Percentage of Very Low Birthweight Births



	2010	2011	2012
All Races	1.81	1.66	1.65
White	1.41	1.30	1.22
Black	2.97	2.80	2.90
Other	1.21	0.80	1.19

**Very Low Birthweight Trend
Three-Year Rolling Averages**



	2008-2010	2009-2011	2010-2012
All Races	1.80	1.76	1.70
White	1.38	1.34	1.31
Black	3.06	3.04	2.89
Other	1.18	1.13	1.06

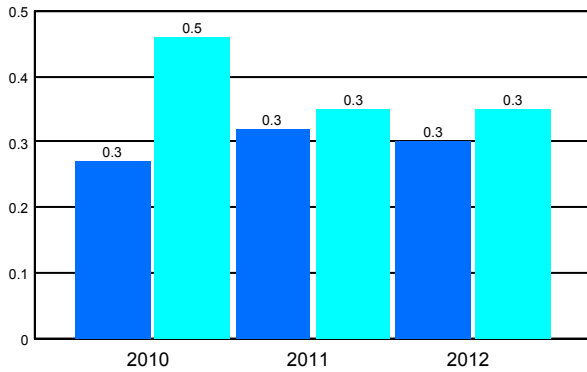
MCH Health Problem Analysis for Miami-Dade Calendar Year 2012

Births to Teens 15-19

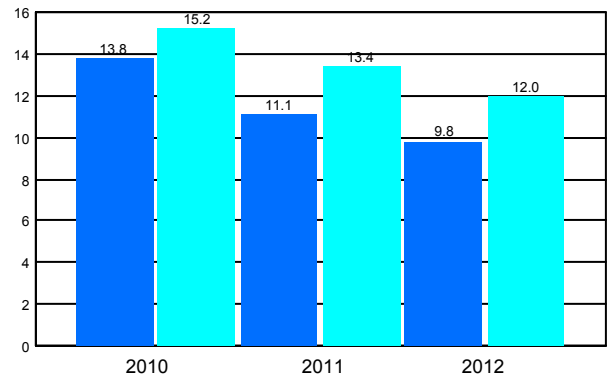
	2010		2011		2012		Comparison to Previous Year
	Miami-Dade	Florida	Miami-Dade	Florida	Miami-Dade	Florida	
Mothers 10-14							
Number	20	192	24	194	22	250	
Rate per 1,000	0.27	0.46	0.32	0.35	0.30	0.35	Decreased
Mothers 15-17							
Number	673	4,219	540	4,723	474	5,398	
Rate per 1,000	13.76	15.20	11.13	11.98	9.82	13.38	Decreased
Percentage of Repeat Births 15-19	16.41	17.82	17.98	17.45	15.91	16.88	Decreased

Data Source: Florida Department of Health, Office of Vital Statistics

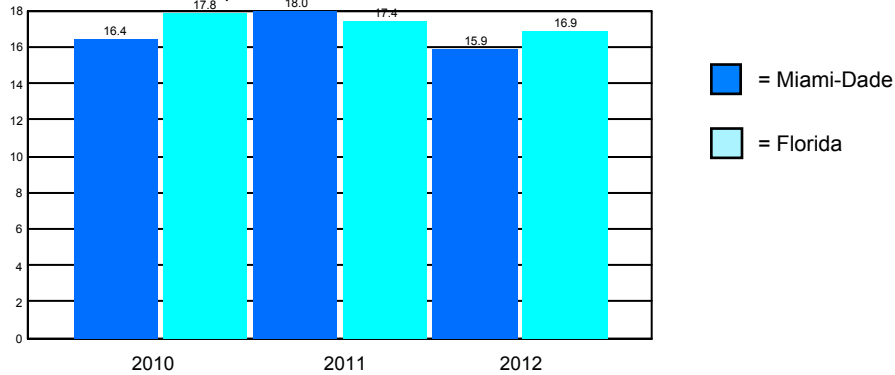
Births to Teens 10-14



Births to Teens 15-17



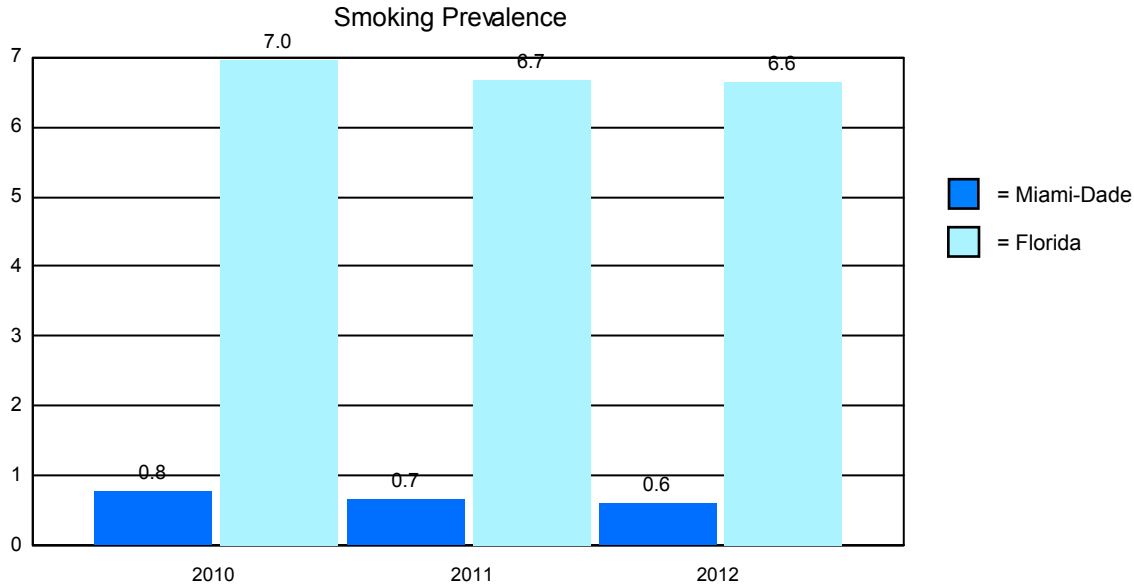
Repeat Births to Teens 15-19



MCH Health Problem Analysis for Miami-Dade Calendar Year 2012

Reported Smoking Prevalence in Pregnancy

	2010		2011		2012	
	Miami-Dade	Florida	Miami-Dade	Florida	Miami-Dade	Florida
Mothers Who Smoked	244	14,946	212	14,232	190	14,150
Percentage of Births	0.78	6.97	0.68	6.67	0.62	6.64



Data Source: Florida Department of Health, Office of Vital Statistics

Pediatric AIDS Cases Among Persons 0 - 4 Years of Age

	2010	2011	2012
Miami-Dade	3	1	1
Florida	11	9	6

Data Source: Florida Department of Health, Bureau of HIV/AIDS

CHD Prenatal Care Clients Offered HIV Counseling

	2010		2011		2012	
	Miami-Dade	Florida	Miami-Dade	Florida	Miami-Dade	Florida
	96.49%	56.18%	0.00%	49.12%	0.00%	52.21%

MCH Health Problem Analysis for Miami-Dade Calendar Year 2012

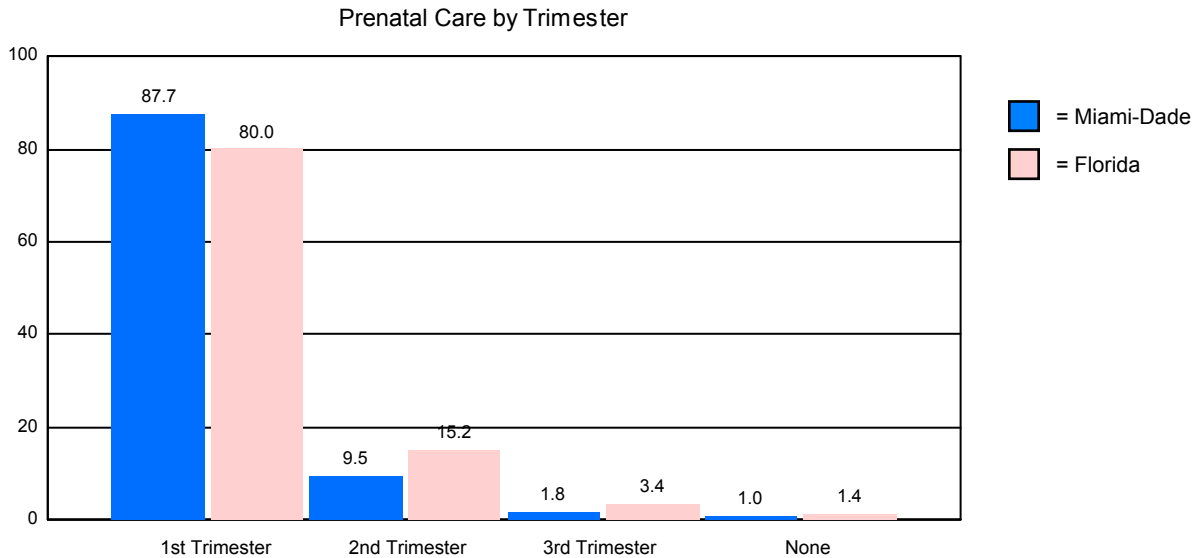
WIC Services

	Persons Eligible for WIC	Percentage Served by WIC
2010		
Miami-Dade	75,515	79.81
Florida	502,959	86.57
2011		
Miami-Dade	75,515	79.81
Florida	502,959	86.57
2012		
Miami-Dade	72,859	77.06
Florida	481,110	82.89

Data Source: Florida Department of Health, WIC & Nutrition Services
Call the [Data Management Unit](#) of WIC & Nutrition Services at 850-245-4202 for the latest data.

Prenatal Care by Trimester of Pregnancy

	1st Trimester	2nd Trimester	3rd Trimester	No Prenatal Care
Miami-Dade	87.65%	9.53%	1.80%	1.02%
Florida	80.01%	15.19%	3.35%	1.44%



Data Source: Florida Department of Health, Office of Vital Statistics

**MCH Health Problem Analysis for
Miami-Dade
Calendar Year 2012**

Immunizations Among 2-Year-Old CHD Clients

	Percentage Fully Immunized	
	Miami-Dade	Florida
2010	97.0%	86.0%
2011	98.0%	94.0%
2012	97.0%	94.0%

Data Source: Florida Department of Health, Bureau of Immunizations

Healthy Start Prenatal Screening and Services

	2010		2011		2012	
	Miami-Dade	Florida	Miami-Dade	Florida	Miami-Dade	Florida
Offered Rate %	94.53	97.54	91.97	96.99	91.85	91.50
Screening Rate %	83.00	85.42	80.53	86.01	83.23	81.94
Consent Rate %	87.80	87.58	87.56	88.68	90.62	89.55

	Number		Percentage	
	Miami-Dade	Florida	Miami-Dade	Florida
Estimated Number of Pregnant Women	30,458	212,172		
Offered Screen	27,975	194,147	91.85	91.50
Consenting to Screen	25,351	173,853	90.62	89.55
Positive Screen + Referred	13,464	96,481	53.11	55.50
Consenting to HS Participation	12,833	91,883	95.31	95.23
Received Initial Contact	9,494	63,936	73.98	69.58
Need Initial Assessment	3,895	23,417	41.03	36.63
Received Initial Assessment	3,097	18,768	79.51	80.15
Need Ongoing Care Coordination	4,495	28,526	47.35	44.62

	Miami-Dade		Florida	
	Clients	Percentage of Clients	Encounters per Client	Percentage of Clients
Total Receiving HS Prenatal Service	17,058		4.75	
Total IC/IA Only	1,413	8.28	3.44	10.84
Total IC/IA/Other HS Service	1,818	10.66	1.95	8.80
Track or Not Face-to-Face	3,970	23.27	5.36	29.24
Face-to-Face, without FSP	1,488	8.72	5.94	10.40
Face-to-Face, with FSP	2,437	14.29	11.25	9.77
Unable to Locate	2,665	15.62	2.34	9.79
Unable to Complete Initial Contact	1,997	11.71	2.40	15.15

	Miami-Dade		
	Clients	Services	Services/Client
Nutritional Assessment and Counseling	811	7,778	9.59
Psychosocial Counseling	1,778	20,986	11.80
Parenting Education	5,903	40,349	6.84
Childbirth Education	4,855	50,237	10.35
Breastfeeding Education	5,187	25,891	4.99
Smoking Cessation Counseling	3,425	7,616	2.22
Interconceptional Education & Counseling	4,008	12,711	3.17

**MCH Health Problem Analysis for
Miami-Dade
Calendar Year 2012**

Pregnant Drug-Abusing Women

	Clients	Encounters/Client	Services/Encounter
Miami-Dade	17	18.35	4.08
Florida	1,395	13.59	4.33

Healthy Start Infant Screening and Services

	2010		2011		2012	
	Miami-Dade	Florida	Miami-Dade	Florida	Miami-Dade	Florida
Screening Rate %	95.61	87.22	98.63	91.21	98.87	91.77

	Number		Percentage	
	Miami-Dade	Florida	Miami-Dade	Florida
Total Number of Births	30,458	212,172		
Consenting to Screen	30,115	194,706	98.87	91.77
Positive Screen + Referred	8,414	66,895	27.94	34.36
Consenting to HS Participation	7,696	57,778	91.47	86.37
Received Initial Contact	5,312	40,918	69.02	70.82
Need Initial Assessment	2,109	12,083	39.70	29.53
Received Initial Assessment	1,740	11,313	82.50	93.63
Need Ongoing Care Coordination	2,454	16,094	46.20	39.33

	Miami-Dade			Florida
	Clients	Percentage of Clients	Encounters per Client	Services per Encounter
Total Receiving HS Infant Service	16,191		4.21	3.81
Total IC/IA Only	989	6.11	2.47	8.56
Total IC/IA/Other HS Service	1,058	6.53	1.87	15.52
Track or Not Face-to-Face	6,498	40.13	3.27	28.52
Face-to-Face, without FSP	639	3.95	8.74	8.80
Face-to-Face, with FSP	1,536	9.49	16.15	11.47
Unable to Locate	2,220	13.71	1.86	6.89
Unable to Complete Initial Contact	1,419	8.76	2.26	14.31

	Miami-Dade		
	Clients	Services	Services/Client
Nutritional Assessment and Counseling	17	127	7.47
Psychosocial Counseling	865	17,600	20.35
Parenting Education	3,478	42,750	12.29
Childbirth Education	61	584	9.57
Breastfeeding Education	2,000	11,336	5.67
Smoking Cessation Counseling	2,082	4,793	2.30
Interconceptional Education & Counseling	2,803	14,476	5.16

Substance-exposed Newborns

	Clients	Encounters/Client	Services/Encounter
Miami-Dade	68	12.99	5.33
Florida	1,284	12.24	4.52